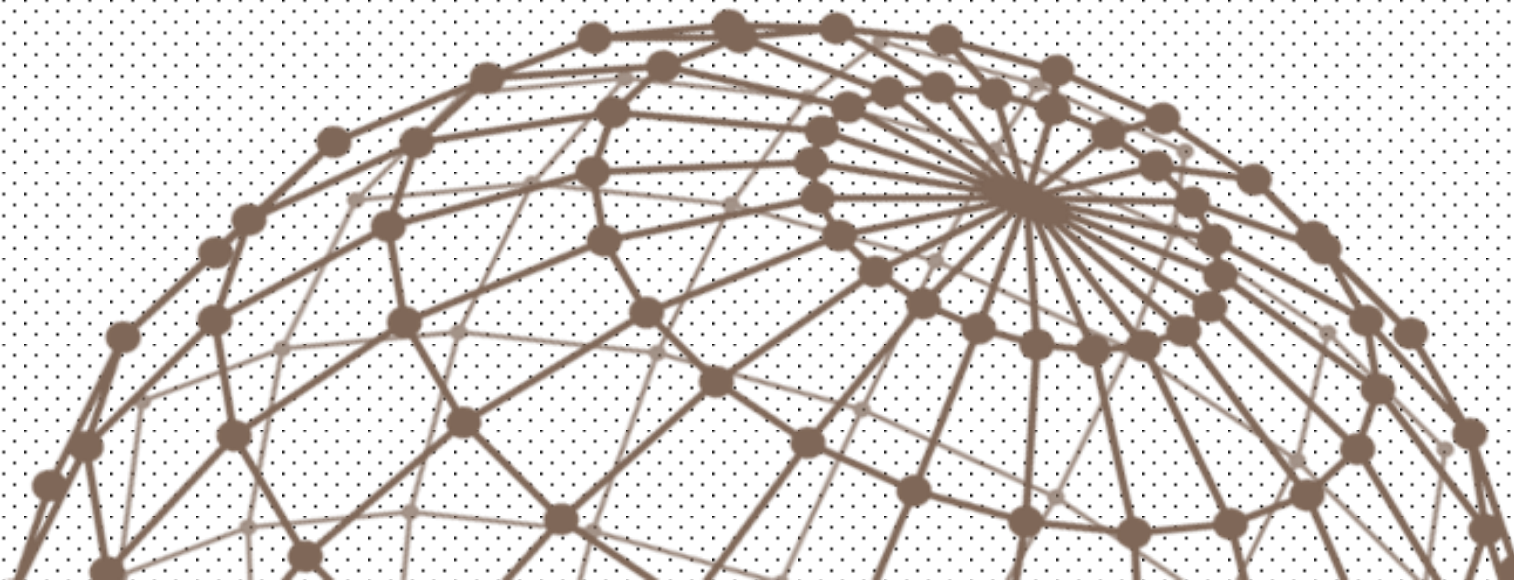


**JM** Partner for your success  
**ADVANCED TECHNOLOGY**



# COMPANY OVERVIEW

---

***JM Corporation Ltd Pte. Korea*** was established in Jan 2013.

We engage in operations that contribute to production efficiency of semiconductors such as supplying semiconductor-manufacturing equipment, parts & consumables, modification project and provide clients with technical expertise advise.

In order for us to offer these operations at world-class manufacturing facilities in the form of high-quality technical services, we are focused on training engineers in Korea, and we have established at our company an educational environment in which exclusive trainers provide technical guidance.

In December 2017, ***JM Advanced Technology*** had established in Malaysia, in order to provide the best solution and faster respond to local customer.

# Our Vision & Mission

Partner for your success



## Vision

Being the most preferred Factory Automation Industrial Supply and Automation Control for major industries in Malaysia complete with system & Semiconductor industries products technical consultancy.

## Mission

Deliver quality services above customers' expectation and satisfaction.

## Core Values

Quality and delivery time control



# COMPANY DETAILS

## **JM Corporation Ltd Pte (Korea)**

206-2 Galcheon-ri, Hyangnam-eup,  
Hwaseong-si, Gyeonggi-do,  
South Korea

Tel : +82-10-6479-9734

Fax : +82-50-4382-9734

Email : [jung@jmcorpo.com](mailto:jung@jmcorpo.com)

## **JM Advanced Technology Sdn Bhd (Malaysia)**

No 859 Jalan Sentosa,  
Taman Seri Sentosa,  
09600 Lunas, Kedah  
Malaysia.

Tel : +60-104061774

Fax : +604-4352555

Email : [king@jmcorpo.com](mailto:king@jmcorpo.com)



# FACTORY South Korea



◆ Address : 206-2 Galcheon-ri, Hyangnam-eup, Hwaseong-si, Gyeonggi-do, Korea

◆ Area : 400 m<sup>2</sup>

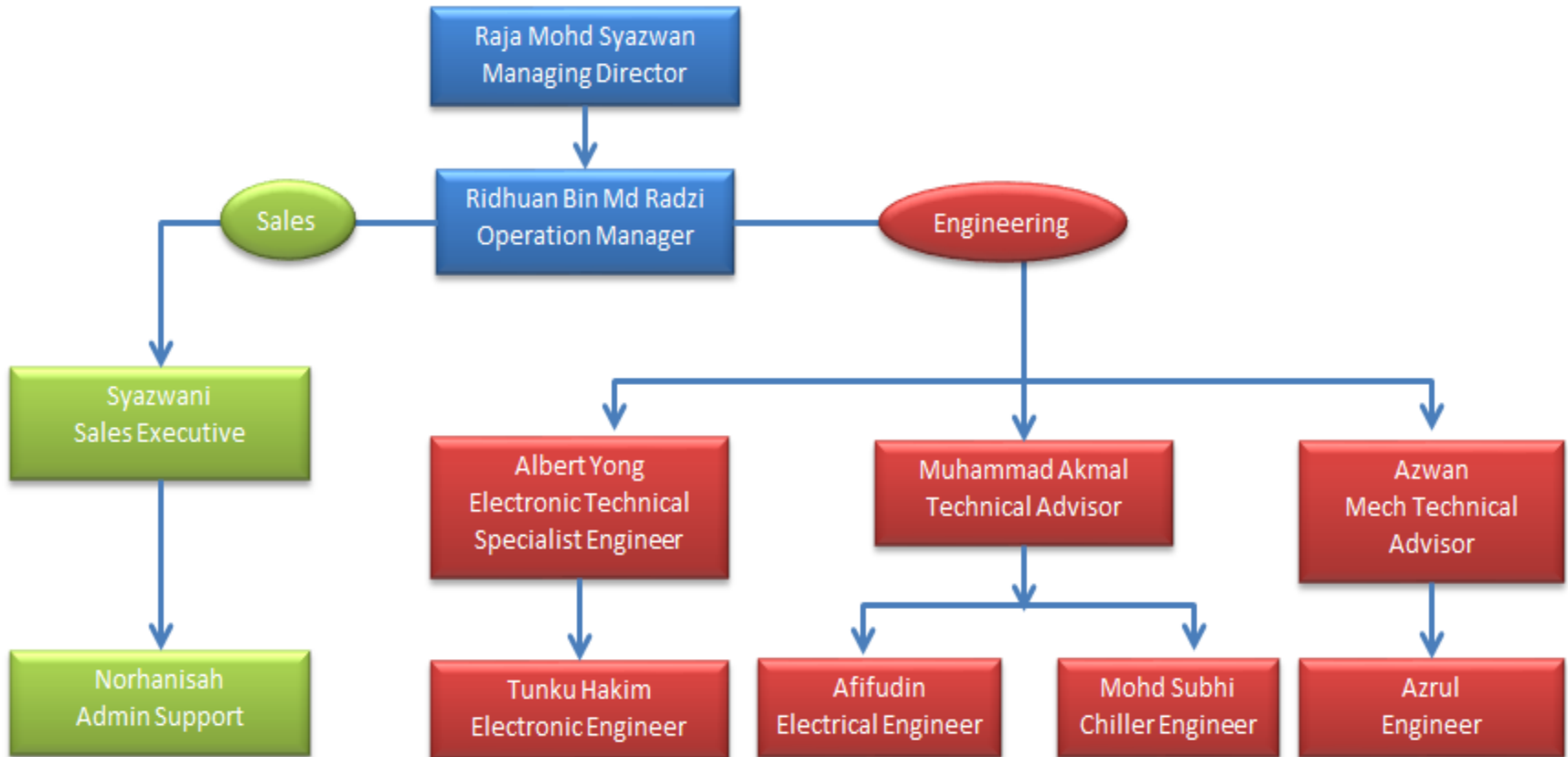


# FACTORY South Korea



# ORGANISATION CHART

## JM Advanced Technology Organisation Chart



# JM STAFF

Name	Experience years	Equipment
Yoo Yeongsun	13 Year	TEL MK-7, MK-8, ACT8, ACT12
Jung Donwoo	13 Year	TEL MK-7, MK-8, ACT8 ACT12 Lithius
Kim Donggun	19 Year	TEL MK-7, MK-8, ACT8 ACT12 Lithius
Han Jong tae	17 Year	TEL MK-7, MK-8, ACT8 ACT12 Lithius
Jung Jung hyuk	6 Year	TEL ACT8 ACT12
Ko Gangik	19 Year	TEL Furnace, KE Furnace
Albert	21 Year	PCB and electronic repair specialist
Raja Syazwan	12 Year	MK-8, ACT8, ACT12, Lithius, TSP, PCB
Muhamad Akmal	10Year	Chiller
Syazwani	5 Year	JM Sourcing specialist
Mohd Ridhuan	20Year	PLC programing, Electronic specialist
Muhammad Afifudin	4Year	MAT Scrubber, TSP, Pump



## OUR VALUE CUSTOMER

---

**Panasonic**

Indah  Water

**PFEIFFER**  **VACUUM**

 **SunEdison**®

 **MUDIM**

 **Fuji Electric**

**ULVAC**

 **FAB**  
MIXED-SIGNAL FOUNDRY EXPERTS

 **Valeo**

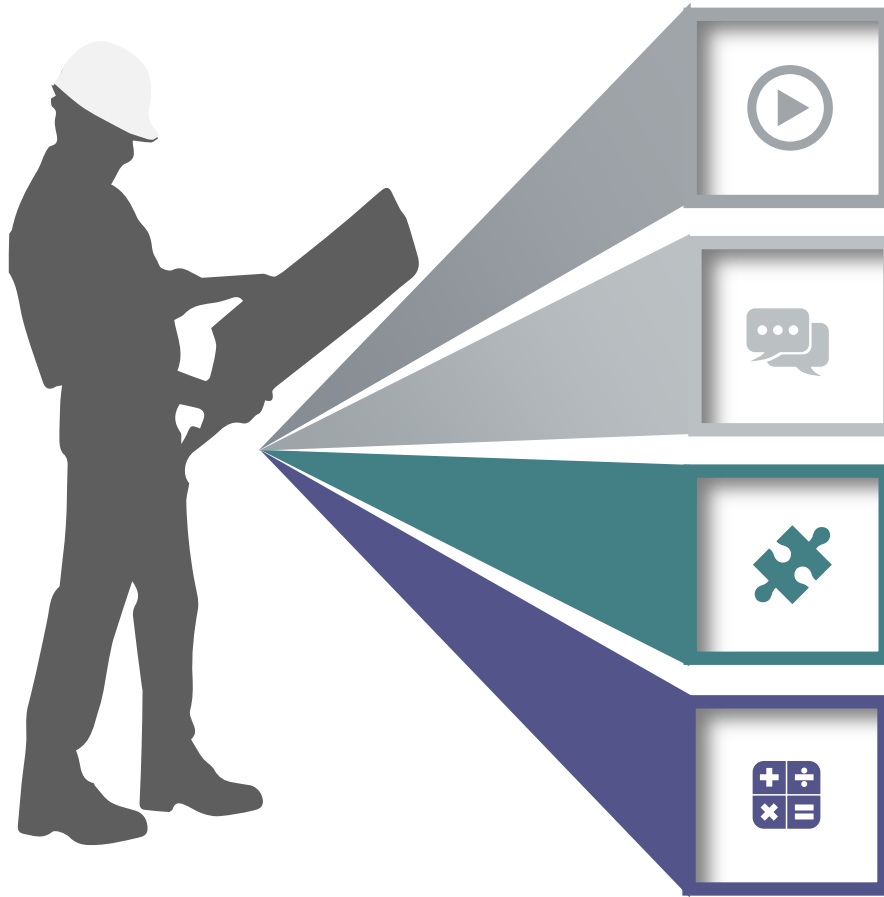
 **HEWLETT®  
PACKARD**

 **TF·AMD**

**SILTERRA**  **JCY** HDD

 **MALAYSIA  
AIRPORTS**

# PRODUCT AND SERVICES



**CONSUMABLES AND FABRICATION**

**INDUSTRIES ELECTRONIC REPAIR**

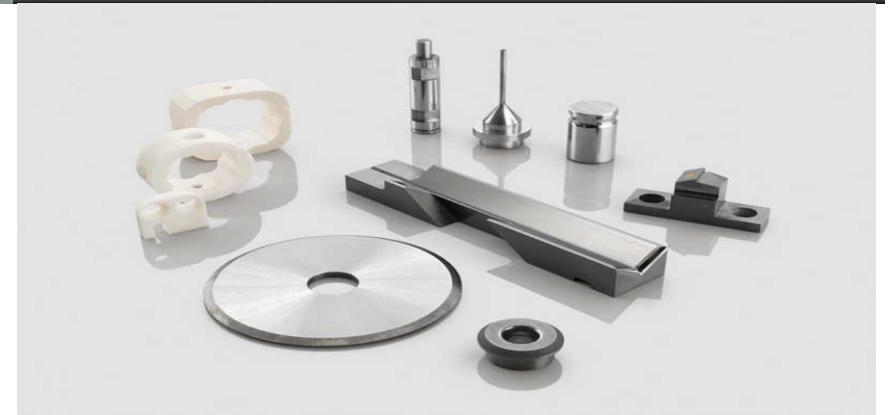
**IMPROVEMENT PROJECT  
&  
PLC UPGRADE**

**EQUIPMENT REFURBISHMENT  
AND SUPPLY**

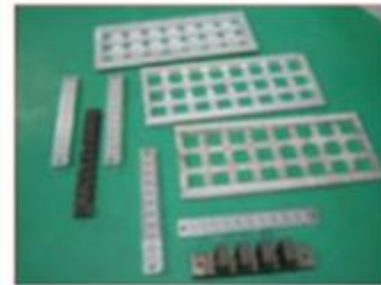
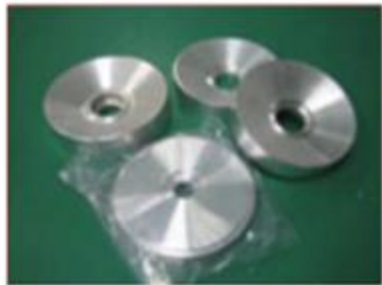


# Consumables/Spare parts Fabrication

# 1.1 TUNGSTEN- (FABRICATION)



## 1.2 PERCISION METAL - (FABRICATION)



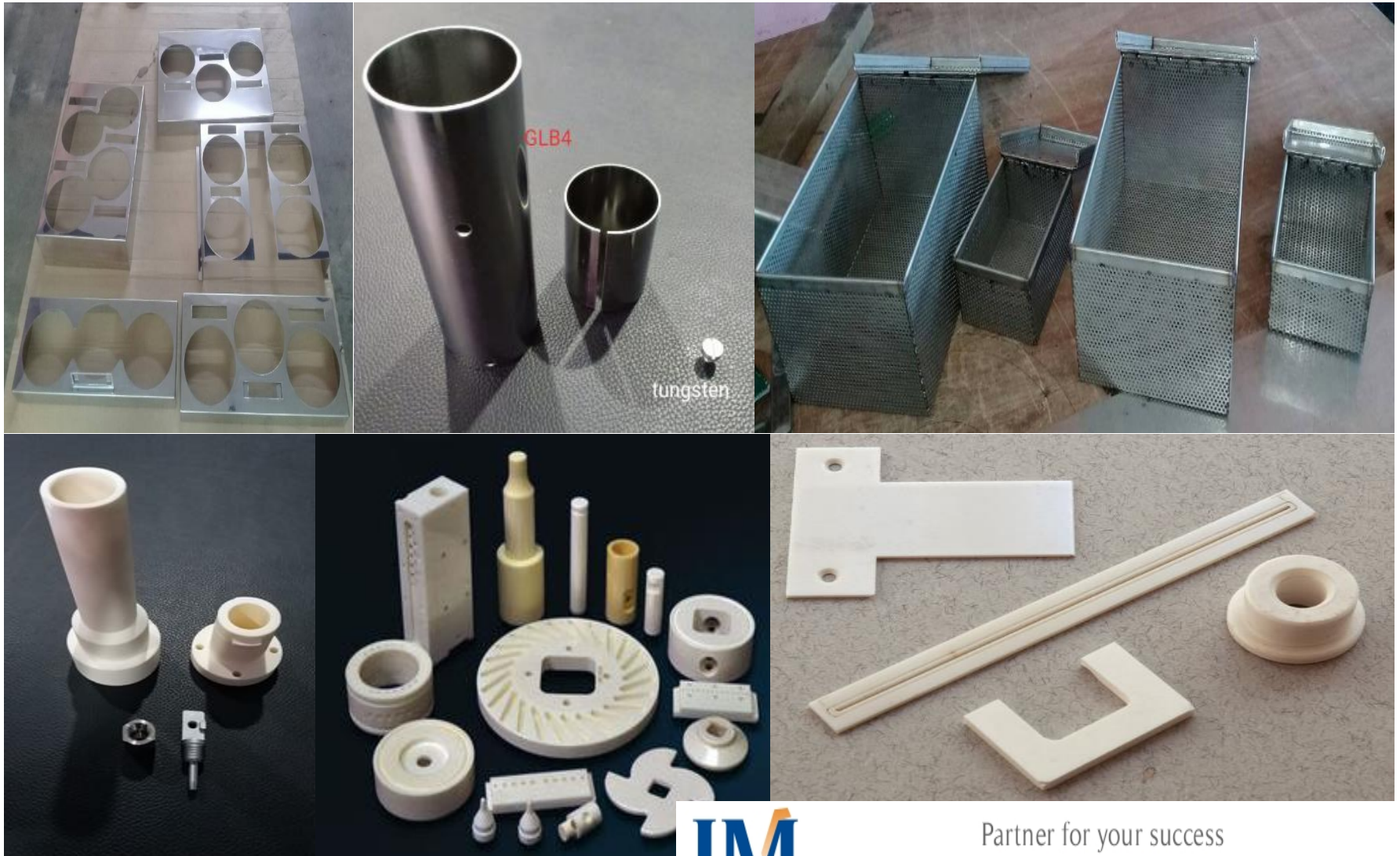


## 1.2 PERCISION METAL - (FABRICATION)





## 1.3 SUS AND CERAMIC - (FABRICATION)



## 1.3 COOPER/MOLY/OTHER - (FABRICATION)





# Supply/Repair and Service



## 2.1 INDUSTRIES ELECTRONIC REPAIR - SERVICES



**JM Advanced Technology Sdn Bhd** is a leading professional repair company with **100% in-house** of component level repair.

We have **technical experts** that up to **20 years of engineering repair experience** which capable repair as below:

**Inverters / AC Drives**

**DC Drives / Servo Drives**

**Programmable Logic Controller (PLC)**

**Human Machine Interface (HMI)**

**LCD Display**

**Printed Circuit Board (PCB)**

**Power Supply**

**Servo Motor**

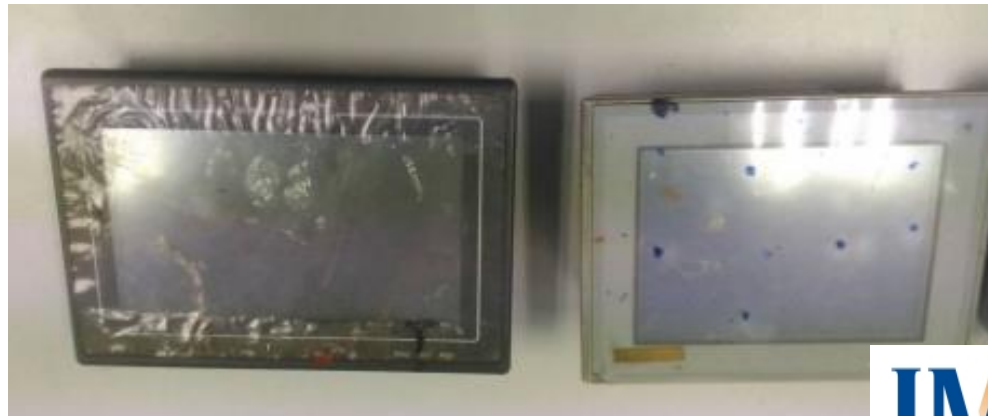
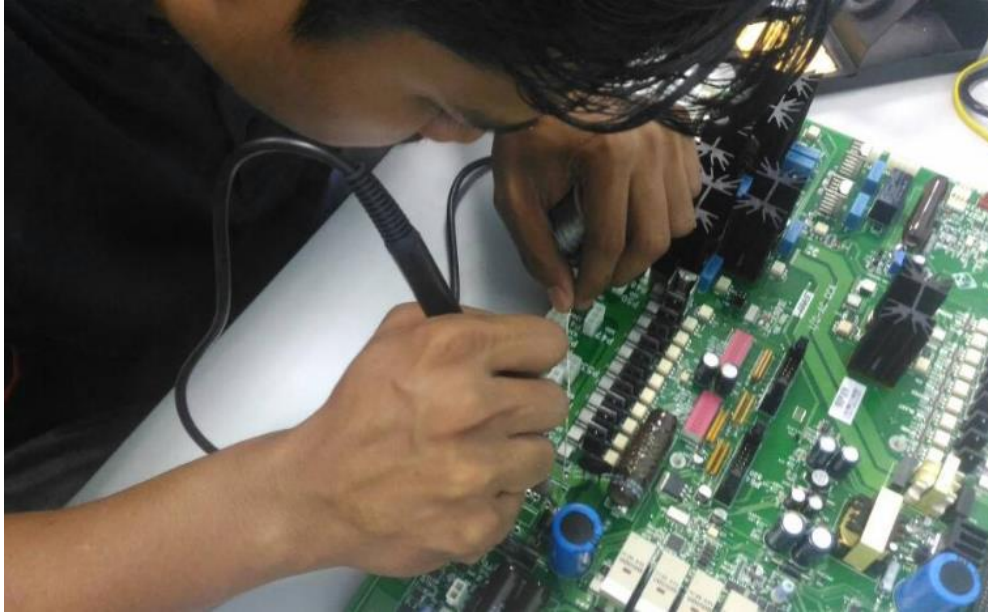
**Control Board and many more...**

**ABLE SOURCING ON ABOVE PARTS!**



Partner for your success  
**JM ADVANCED TECHNOLOGY**

## 2.1 INDUSTRIES ELECTRONIC REPAIR - SERVICES



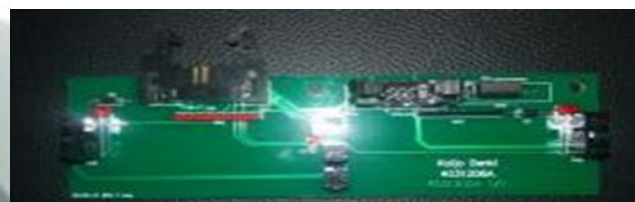


## 2.1 INDUSTRIES ELECTRONIC REPAIR - SERVICES





## 2.1 INDUSTRIES ELECTRONIC REPAIR - SERVICES



## 2.1 INDUSTRIES ELECTRONIC REPAIR - SERVICES

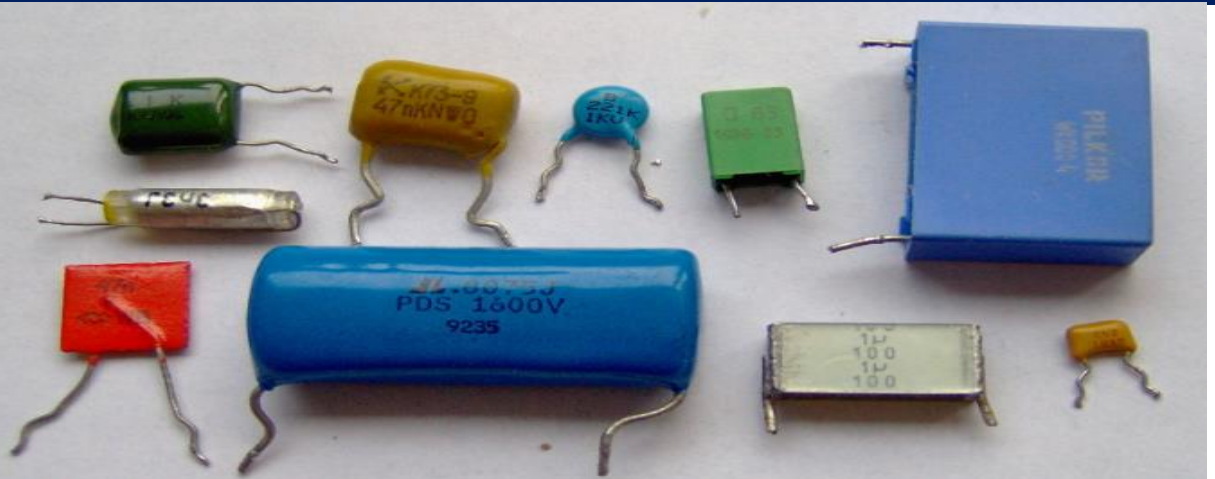




## 2.1 INDUSTRIES ELECTRONIC REPAIR - SERVICES



## 2.1 INDUSTRIES ELECTRONIC - SUPPLY



- ☐ Inverters / AC Drive
- ☐ DC Drives / Servo Drives
- ☐ Programmable Logic Controller (PLC)
- ☐ Human Machine Interface (HMI)
- ☐ LCD Display
- ☐ Printed Circuit Board (PCB)
- ☐ Power Supply
- ☐ Servo Motor
- ☐ Control Board and many more...



## 2.1 ELECTRONIC REPAIR BRAND - SERVICES



SIEMENS

Pro-face

azbil

**TOSHIBA**  
Leading Innovation >>>

OMRON

**YASKAWA**

**Panasonic**

**ABB**

Quality and Technology  
**SHIMADEN**

**Schneider**  
Electric

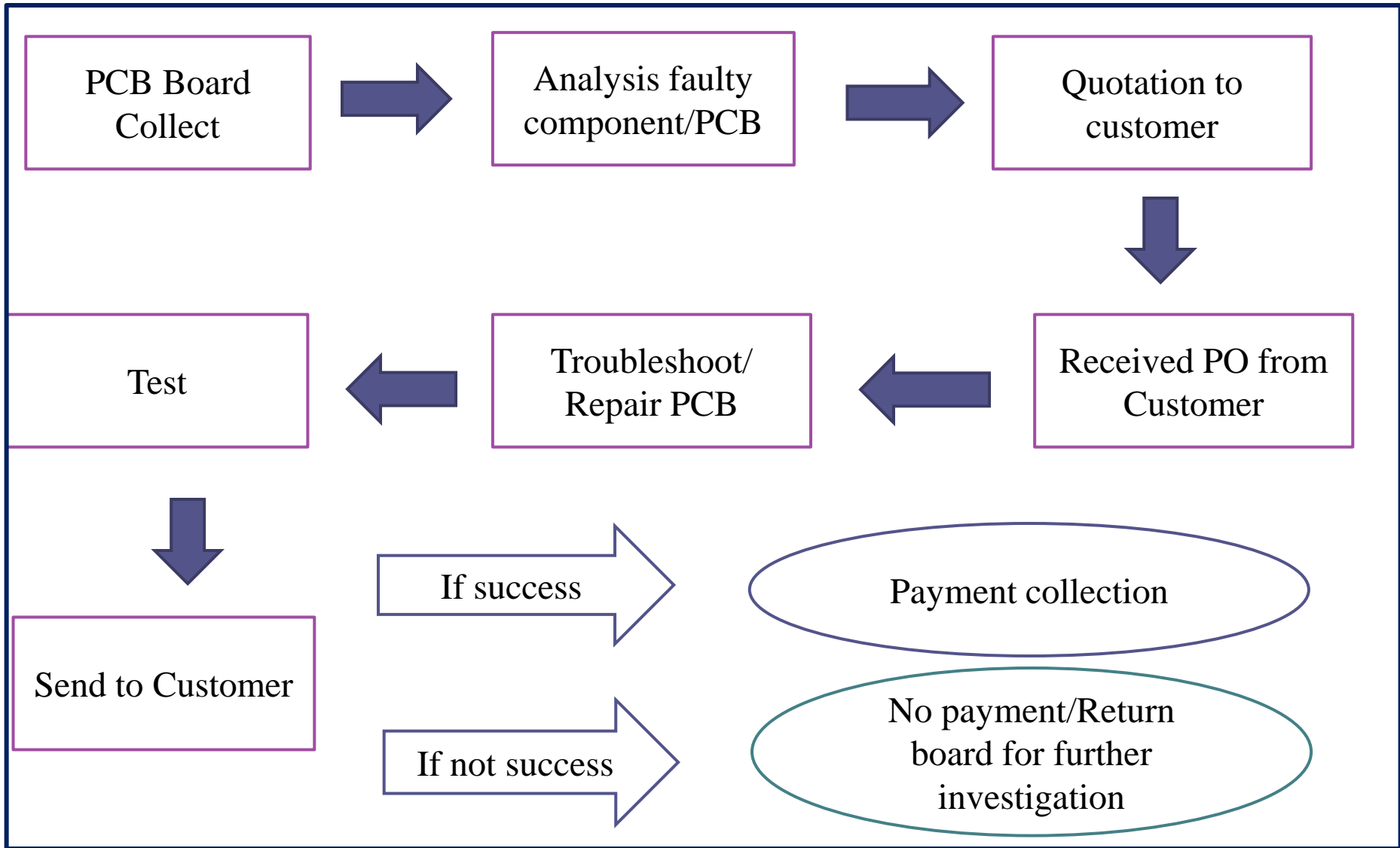
**KEYENCE**

**Honeywell**

**FANUC**  
ROBOTICS

**JM** ADVANCED TECHNOLOGY  
Partner for your success

## 2.1 ELECTRONIC REPAIR - REPAIR SERVICE FLOW





## 2.2 OVERHAULS KITS - PUMP

 **Leybold**  
vacuum

 **BECKER**

 **ALCATEL**

 **BUSCH**  
Vacuum Pumps and Systems

 **BOC EDWARDS**

**ULVAC**

 **Kashiyama**

**ORION**



# IGX 100 OVERHAULS KITS - PUMP





# IH 600 AND IH 1000 OVERHAULS KITS - PUMP



# IH 1800 AND HCDP160 OVERHAULS KITS - PUMP





[illegible]



# QMB 1200 OVERHAULS KITS - PUMP



## 2.2 REPAIR & OVERHAULS CHILLER



## 2.2 REPAIR & OVERHAULS LAUDA





## 2.2 REPAIR & OVERHAULS TEL TnH



Shinwa T&H –ESA-8

### **Supply and Install:**

- all type of air conditioning.
- all type pump, compressor and fan motor.
- all kind of electronic part.
- safety equipment.
- mechanical fabrication, piping and instrumentation.
- all type of gases for chiller



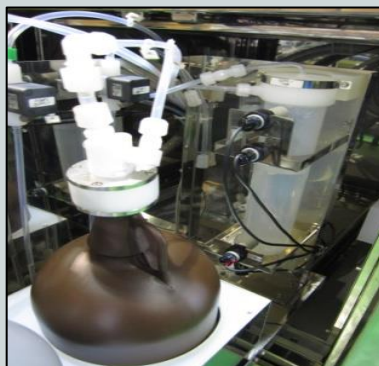
# Improvement Project/ PLC upgrade and modification

## 3.1 SMART BOTTLE CAP- (IMPROVEMENT PROJECT)

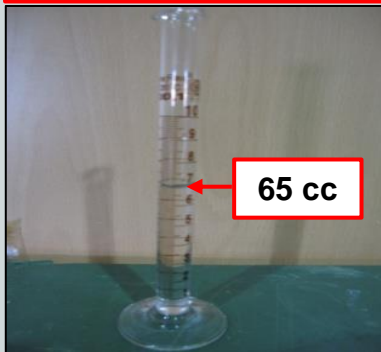
### Conventional Bottle cap PR residue



**Glass Bottle**



**PVC Bottle**



**65 cc**



Lithius, Lithius PRO, ACT12, and SEMES products do not allow for adjustability of nozzle length, always leaving residues.

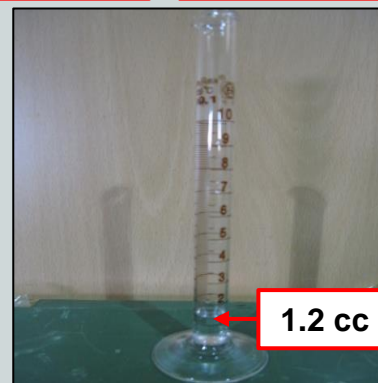
### Smart Bottle Cap PR residue



**Glass Bottle**



**PVC Bottle**



**1.2 cc**

New Bottle Cap design provides adjustable nozzle length to support removal of all residues.

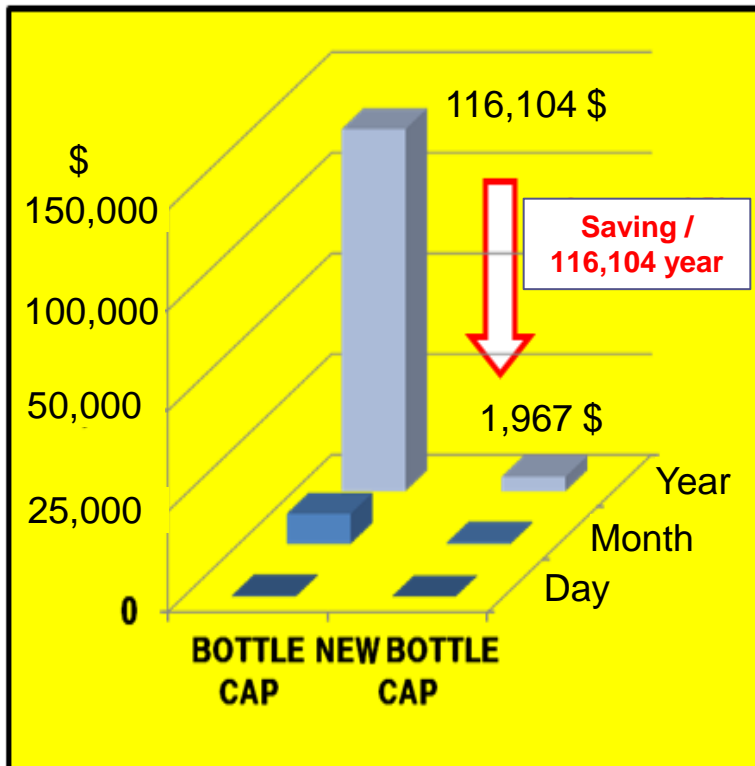


## 3.1 SMART BOTTLE CAP Cont.

### ■ Smart Bottle Cap Enables Improvement

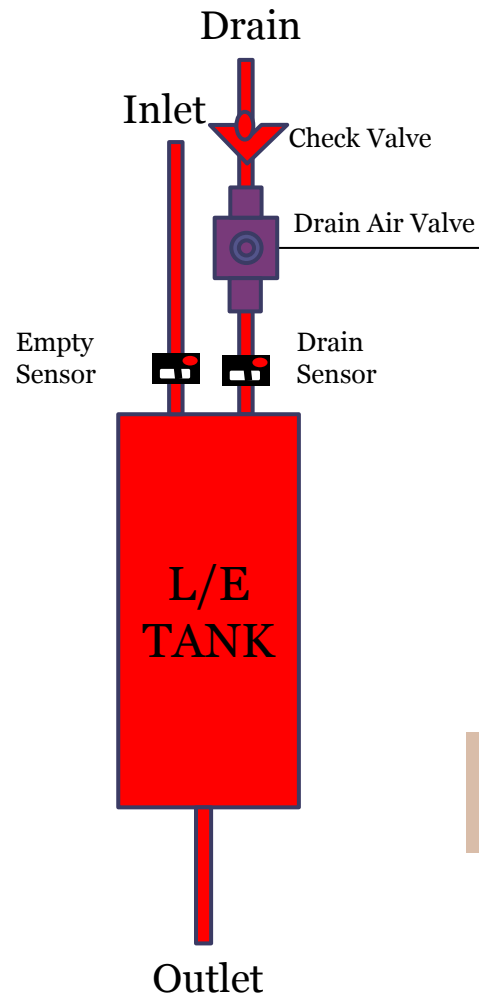
Est. annual PR residues in PR Bottle for disposal

➔ Conventional Bottle Cap vs. Smart Bottle Cap



Description	Conventional Bottle Cap	Smart Bottle Cap	Saving
1 bottle	31.74 \$	0.529 \$	31.22 \$
1 day	317.4 \$	5.29 \$	312.11 \$
1 month	9,839.4 \$	163.99 \$	9,675.41\$
1 year	118,072.8\$	1,967.88 \$	116,104.92\$

## 3.2 PSDS-(DEVELOPMENT)



### Issue

- Easy to waste Photoresists when Vent/Purge bubble inside LE Tank during bottle change due to doesn't have base line.

### Improvement

1. System will stabilize amount of resist in LE Tank during air vent/purge bubble
2. System will prevent reverse flow and contamination issue in drain tube

## 3.3 Program Logic Control upgrade/Modification

A Programmable Logic Controller, or **PLC** for short, is simply a special computer device used for industrial control systems. The **basic** units have a CPU (a computer processor) that is dedicated to run one program that monitors a series of different inputs and logically manipulates the outputs for the desired control.

### **How PLCs Work.**

A programmable logic controller is a specialized computer used to control machines and processes. It therefore shares common terms with typical PCs like central processing unit, memory, software and communications.

### **Why would you use a PLC?**

**PLC** as sounds is a device that can be programmed as per the need in order to control machine and devices. Basically **PLC** is **used** in different industries with different applications. In general the device working on high voltage can be easily controlled by **PLC** in different industries



## 3.3 PLC BRANDS

### Leading Brands Of PLC

#### AMERICAN

1. Allen Bradley
2. Gould Modicon
3. Texas Instruments
4. General Electric
5. Westinghouse
6. Cutter Hammer
7. Square D

#### EUROPEAN

1. Siemens
2. Klockner & Mouller
3. Festo
4. Telemecanique

#### JAPANESE

1. Toshiba
2. Omron
3. Fanuc
4. Mitsubishi



### 3.3 PLC Brand - Our Specialists

---

**ABB**

**Rockwell**  
Automation  
 **Allen-Bradley**

**Schneider**  
 **Electric**

 **Fuji Electric**

 **DELTA**



**OMRON**®

**SIEMENS**

## 3.3 Our Specialists





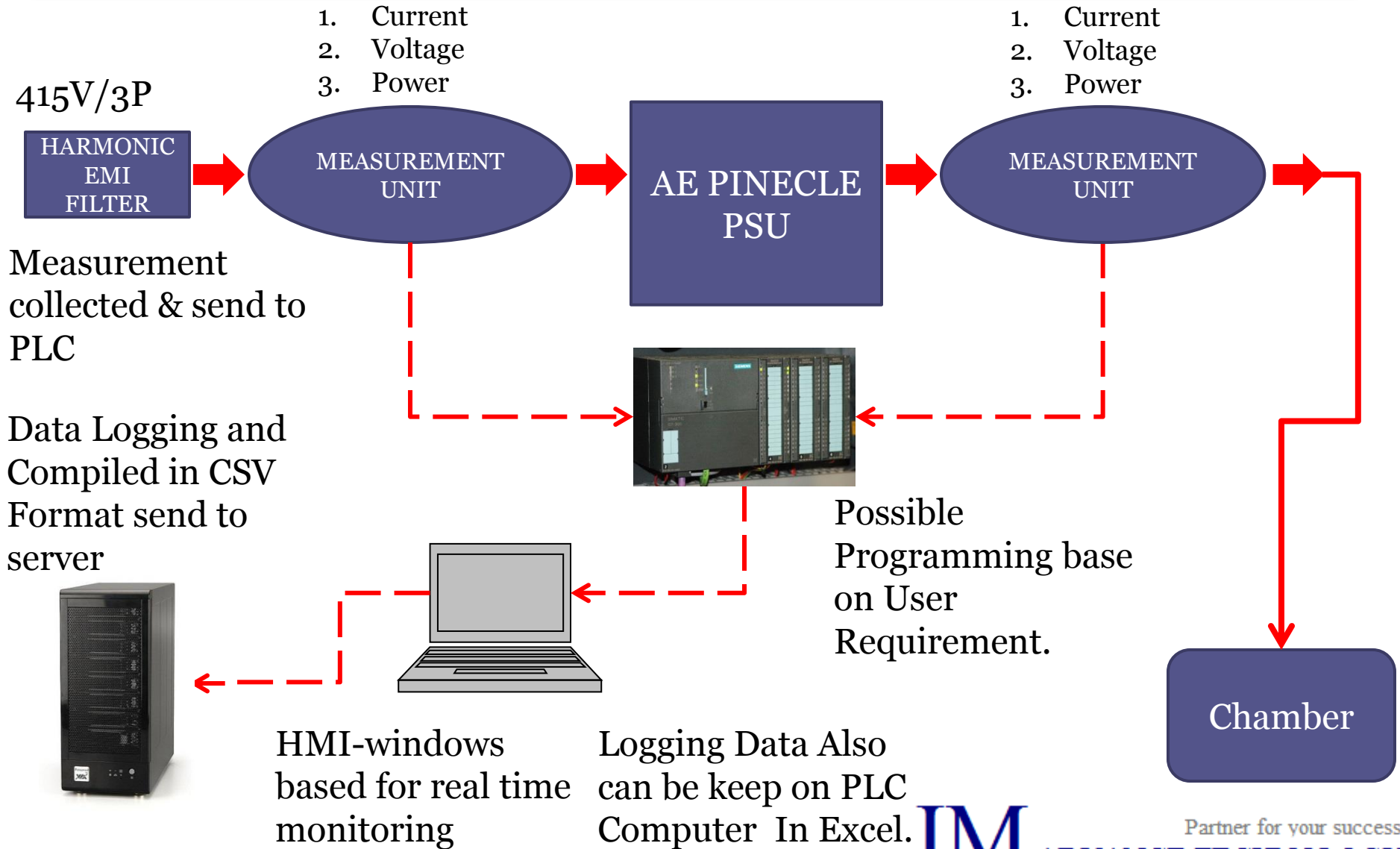
## 3.3 Our Specialists



### 3.3 SAMPLE OF PLC - JM CONVEYOR (FUJI)



# Power Monitoring System





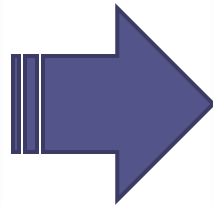




# Equipment Refurbishment/ Relocation and Installation

## 4.1 EQUIPMENT REFURBISHMENT AND RELOCATION

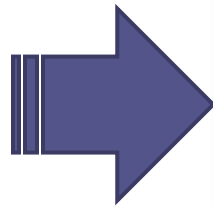
Used Equipment  
Refurbishment  
Modification



### TEL CLEAN TRACK

- ACT Series ACT12, 8
- MARK Series MARK-2, V, VZ, 7, 8

Equipment Relocation



### TEL CLEAN TRACK

- Lithius Series, Lithius, Pro, I, V, Z
- ACT Series, ACT12, 8
- MARK Series, MARK-2, V, VZ, 7, 8

## 4.2 TOOLS REFURBISH/RELOCATION/INSTALLATION

### Customer reference list world wide

#### Result in Korea

Dongbu Hitek

ACT8 Track Refurbish and Installation ( 2 Equipment)

Hynix

ACT8 Track Retrofit and relocation ( 1 Equipment)

#### Result in Taiwan

VisEra

ACT8 Track Refurbish and Installation ( 1 Equipment)

ACT12 Track Refurbish and Installation ( 1 Equipment)

TSMC

ACT12 Track 2C1D Refurbish and Installation ( 1 Equipment)

ACT8 Track 4C4D Refurbish and Installation ( 2 Equipment)

Mark8 Track Relocation ( 1 Equipment)

Mark7 Scrubber Relocation ( 1 Equipment)

Mark7 Track Refurbish and Installation ( 1Equipment)

#### Result in Malaysia

Silterra

ACT8 Track Modification ( 2 Equipment)

#### Result in Japan

Sony

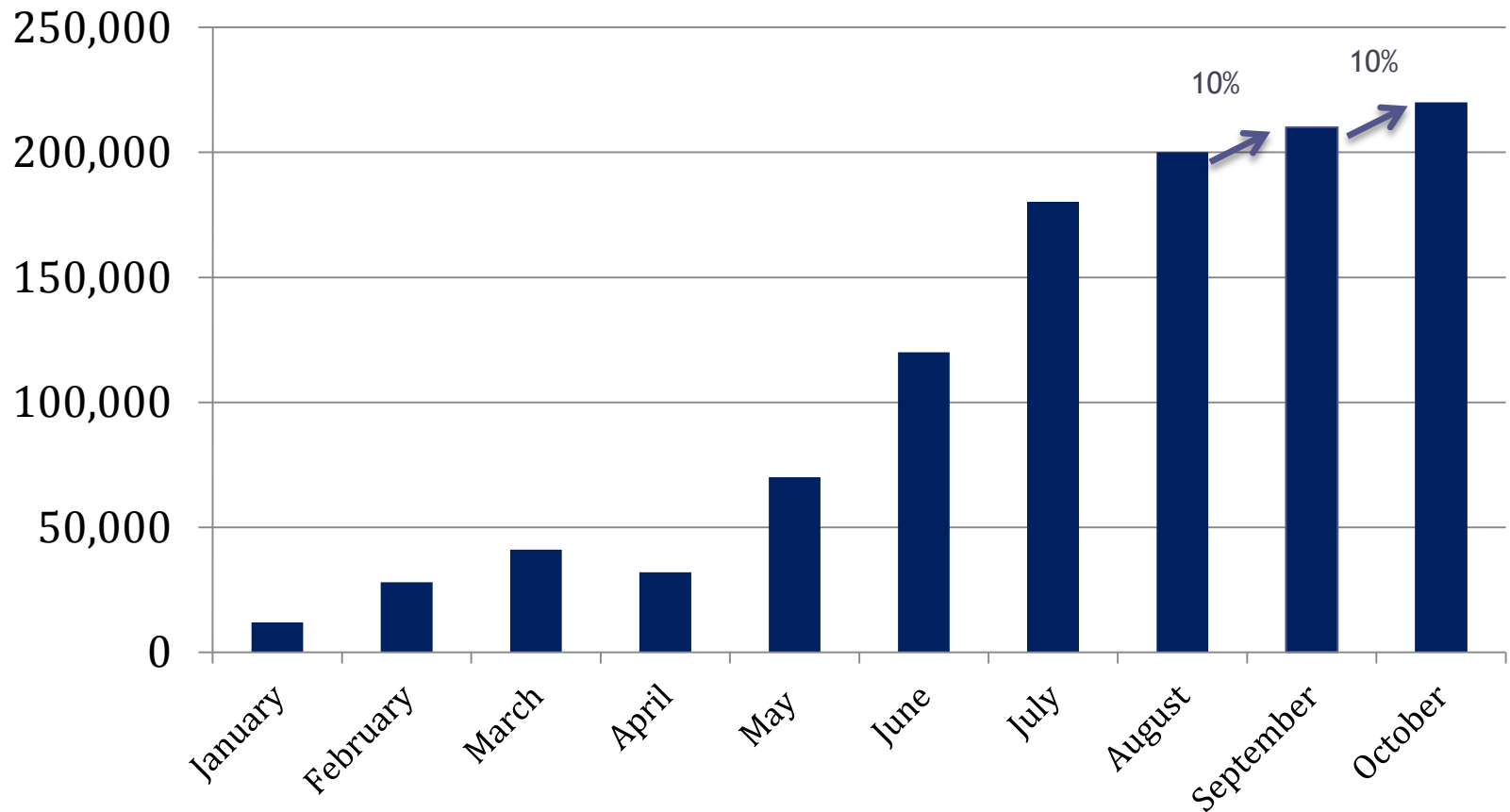
ACT8 Track Relocation & Installation ( 2 Equipment)

Mark8 Track Dismantlement ( 12Equipment)

ACT8 Track Dismantlement ( 16 Equipment)

# COMPANY PERFORMANCE

## HISTORICAL REVENUE TREND + 3 MONTHS PROJECTION





# COMPANY CERTIFICATE



T 4534-O

## *CERTIFICATE OF ATTENDANCE*

This is to certify that

**RAJA MOHD SYAZWAN BIN RAJA MOHAMED**

**IC Number : 880719-35-5055**

has attended course on

**Fundamental Of Occupational Safety, Health And Environment Management**

on

**28 - 29 April 2014**

at

**NIOASH Malaysia Headquarters, Bangi**

**Ir HAJI ROSLI BIN HUSSIN**  
Executive Director  
NIOASH

ISO 9001:2008 Certified

# COMPANY CERTIFICATE



NP 1074-M

## *SIJIL KEHADIRAN*

Adalah dengan ini disahkan bahawa

**NURUL SYAZWANI BINTI MANSOR**

**No. K.P. : 890301025584**

telah menghadiri kursus

**Program Persijilan Pegawai Keselamatan Dan Kesihatan**  
pada

**3 September - 4 Oktober 2012**

**Ir HAJI ROSLI BIN HUSSIN**  
**Pengarah Eksekutif**  
**NIOSH**

# COMPANY CERTIFICATE

UNITED KINGDOM

SINGAPORE

MALAYSIA

PHILIPPINES

INDONESIA

CHINA

[www.nevilleclarke.com](http://www.nevilleclarke.com)

## Certificate



This is to certify that

**Raja Mohd Syazwan Bin Raja Mohamed**

has attended the Neville Clarke training course for

**Potential Failure Mode & Effect Analysis (FMEA)**

Conducted by

Sow Lai Seng, Alex

Course Date : 11 May 2016

Certificate No: AMS09-(0166)16

Authorised Signature

**NevilleClarke**



**JM** ADVANCED TECHNOLOGY

Partner for your success

# SUMMARY

---



**We, JM Advanced Technology Sdn Bhd with principal JM Corporation (Korea) has developed strong alliances with international partners and own innovative products/solutions to serve our customers.**

**We are always here to meet our customer's needs.  
Partner for your success**





# Thank You

**Malaysia Contact Person :**

**Syazwani**

**JM Advanced Technology Sdn Bhd**

**+6010-4691774**

**Sales\_malaysia@jmcampo.com**